



50cd Obstruction Light - 24Vdc

CEL-50-24-CST - LED Aircraft Warning Light

Key features

- Based on LED technology
- 50cd luminous output
- Steady burning red light
- Complete set with accessories
- Extremely reliable
- Very long life time
- Low power consumption
- 24VDC operating voltage
- Stabilised light output
- Easy to install
- Mounting set and terminal box included

Benefits

- Long maintenance intervals
- Low energy costs
- Input voltage variations do not effect light output
- Very low lifetime costs

Optical characteristics

- Intensity >50cd
- Colour aviation red
- Horizontal radiation pattern 360°
- Vertical radiation pattern 23°
- Current for the LEDs is stabilised by constant current generator
- Light output degradation less than 30% after 100,000hrs of operation

Electrical characteristics

- LEDs are in several separate groups
- Nominal operating voltage 24VDC
- Power consumption <10W (<0.5A constant current)
- Operating voltage range 24 to 28VDC
- Overvoltage protection

Other

- Black anodised aluminium housing
- Galvanised mounting arm
- Acid proof U-bolts and hex nuts
- Uncoloured glass cover
- Degree of protection IP65
- Operating temperature range -55 to +55°C
- Height 300 mm, diameter 140mm
- Wind load@ 200km/h <150N
- Total weight 3.0kg
- 5 year warranty

Order Code: CEL-50-24-CST

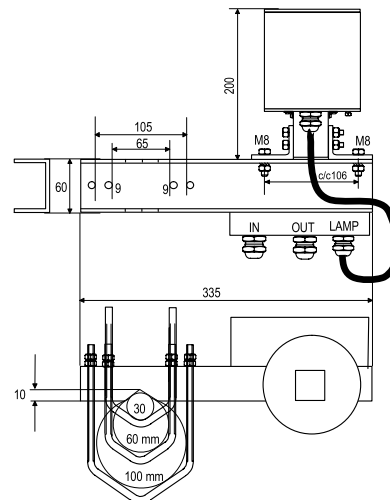
Also available with 12VDC, 48VDC and 230VAC voltages

Made in EU

Page 1 of 2



CEL-50-24-CST



Mechanical dimensions



T: +44 (0)20 8540 1034
F: +44 (0)20 8543 3058
E: info@contarnex.com

Contarnex Europe Limited
252 Martin Way,
Morden, Surrey SM4 4AW
United Kingdom



50cd Obstruction Light - 24Vdc

CEL-50-24-CST - LED Aircraft Warning Light

Installation Instructions

CEL-50-24-CST is an obstacle light utilising LED technology. The cabling and installation principles are similar to those of conventional obstacle lights, the only exception being the correct polarity required by DC feed.

Terminal box includes screw terminals and overvoltage protectors.

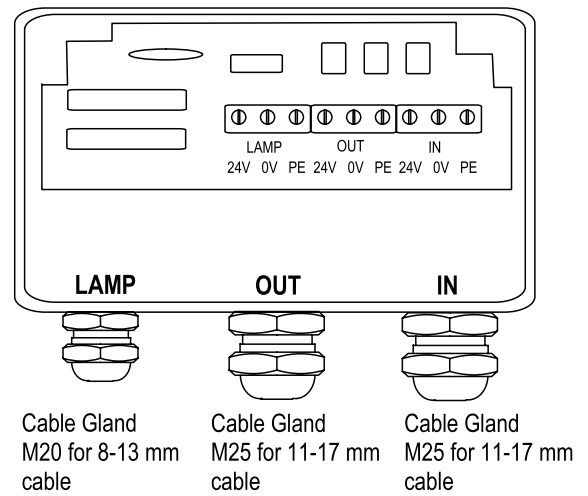
The polarity is:

- Blue -
- Black +
- Yellow-Green PE

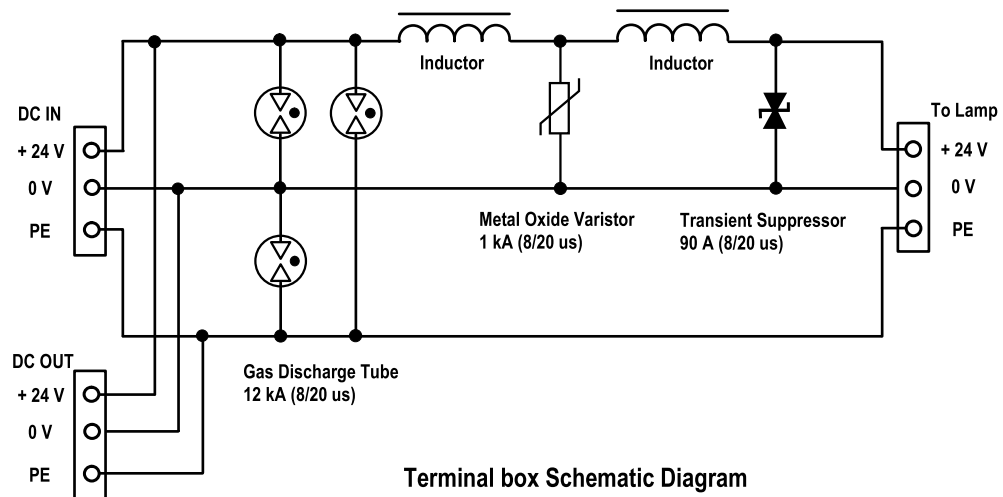
All connection alternatives can be protected with a 6A or 10A fuse or with a circuit breaker (C curve).

Installation specifications

- Cable gland for lamp: M20, 8-13 mm cable
- Cable gland for IN and OUT: M25, 11-17 mm cable
- Wire diameter: max. 6 mm²
- Recommended cable: 2x1.5+1.5 or 2x2.5+2.5 mm²



CEL-50-24-CST terminal box



Terminal box Schematic Diagram

OPERATING VOLTAGE

24 V DC

CAUTION ! LED RADIATION

DO NOT STARE INTO LED BEAM OR VIEW DIRECTLY WITH OPTICAL INSTRUMENTS.
CLASS 2A LED PRODUCT