

THE SIGMA CALL SYSTEM



Safe and Easy to use

The Sigma call system is intended for nursing homes, service centre and infirmaries, etc. It increases the safety of residents and patients, and alleviates the work of the staff.

Sigma is flexible and easy to use. It is also as easy to install a call system for a nursing home with several rooms as it is for a single toilet.

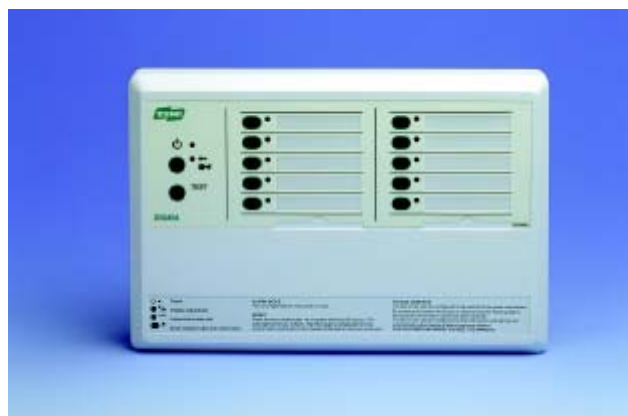
Sigma consists from basic components from which any system can be built. The system is reliable and safe with monitoring for faults such as breakage of wire and short-circuiting.

How SIGMA works

When a call button is pressed the room indicator and the appropriate indicator in the panel will start to flash and sounder. The indicators show which room is calling. IN the room the reassurance LED on the call button is lit, indicating the call has been accepted. The nurse can mute the buzzer in the panel before going to the location.

The alarm is cleared on the reset button in the room, and all the indicators, reassurance LED's clear. System is now ready for the next call.

Call received at the panel can be transferred (ie paging or telephone dialler) with a separate alarm device.



SIGMA SYSTEM COMPONENTS

Room Indicator FLSY 2205

The room indicator to which the call and reset buttons are connected is usually placed outside the room. The device has both visual and audible alarms, the sound level being adjustable. Usually the room indicator is part of a larger system and connected to the SIGMA panel, but it can also be used independently.

Eight call and four reset buttons can be connected to one room indicator. The device also accepts ordinary switches and sensors with closing and/or opening contact. The room indicator can be either surface or flush mounted.

Group Indicator FLSY 2206

The group indicator is used separately with one or multiple room indicator showing the group from which the alarm comes. The device has both visual and audible alarm, the alarm sound being adjustable. The group indicator is similar to the room indicator FLSY 2205.

Call Button 20-101

The alarm is given by pressing the call button or by pulling the cord. The device has a membrane type switch for ease of cleaning, together with a reassurance LED and text 'CALL'. Surface or flush mounting.

Reset Button 20-102

The nurse resets the alarm, indicated by flashing LED, by pressing the membrane button. Surface or flush mounting.

Hand Held Call Unit 20-103

This device, with 2 m flex and two reassurance LED's, can be placed so that it is within comfortable reach of the patient with the help of a loop fastener. Should the call unit come loose from its socket or should the cable be broken or short-circuited, the system gives an alarm.

Socket STR-4P

The hand held call unit requires this 3-pole 6.3 mm socket with a special surface or flush box.

The Sigma Panel

The panel has ten monitoring lines. To each of these it is possible to connect one or several areas (e.g. rooms or toilets). Large systems can use multiple SIGMA panels in an arrangement where one is the main panel and the others are sub-panels, or they can all be parallel.

FSLY 2210

Ceiling Pull Unit with orange lens with reassurance neon c/w 2m pull cord and acorn, usually installed in toilets or bathrooms

FLSY 2220

Red Dome Panic Switch with twist to reset feature. High IP rating for saunas pool areas etc.

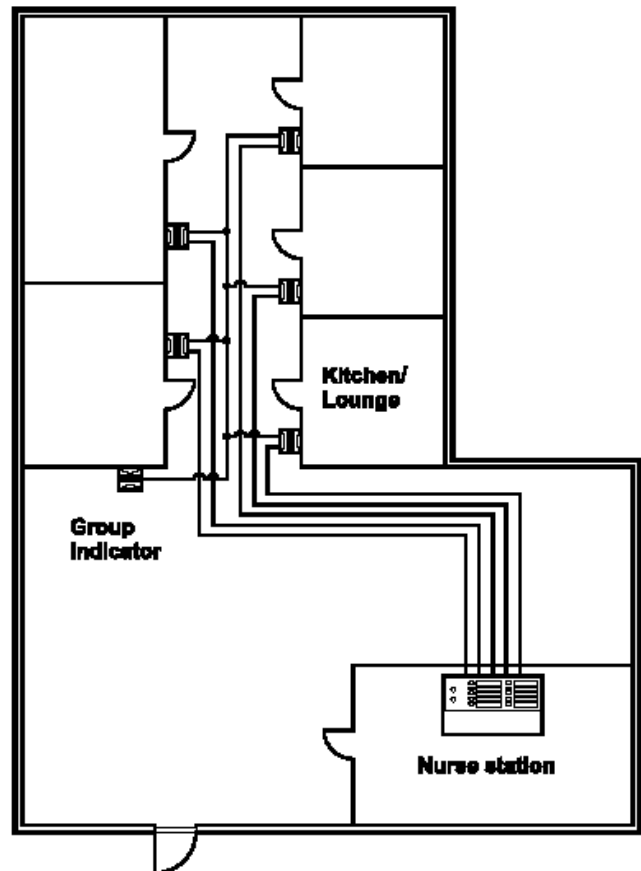
FLSY 2255

A key reset panic unit, wall mounted in offices or social areas. Press in the red button, and reset the unit with a key.

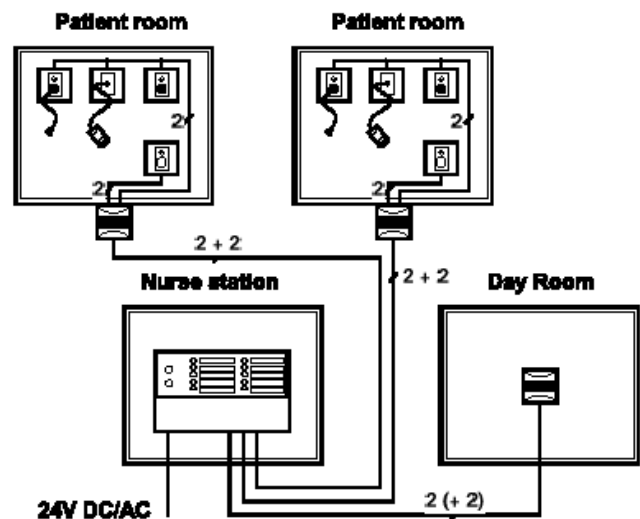
MIM 8118

Transformer from mains 230V AC to 24VAC operating voltage.

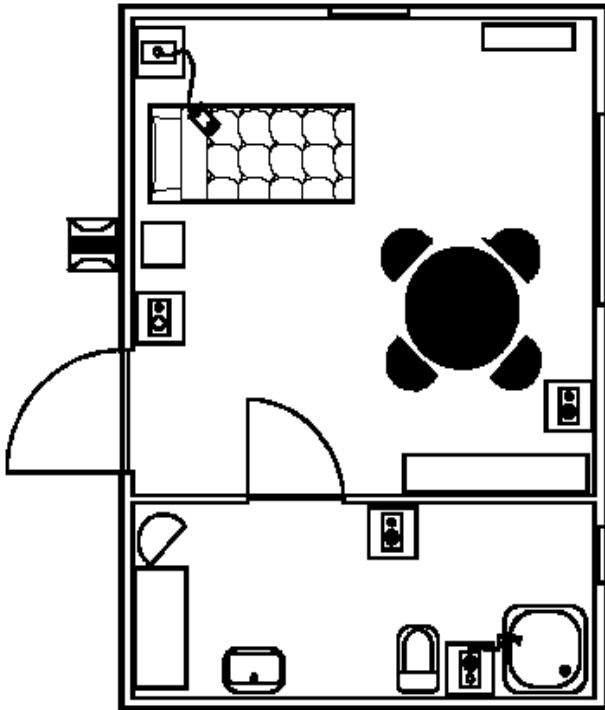
Example 1: Elderly care home



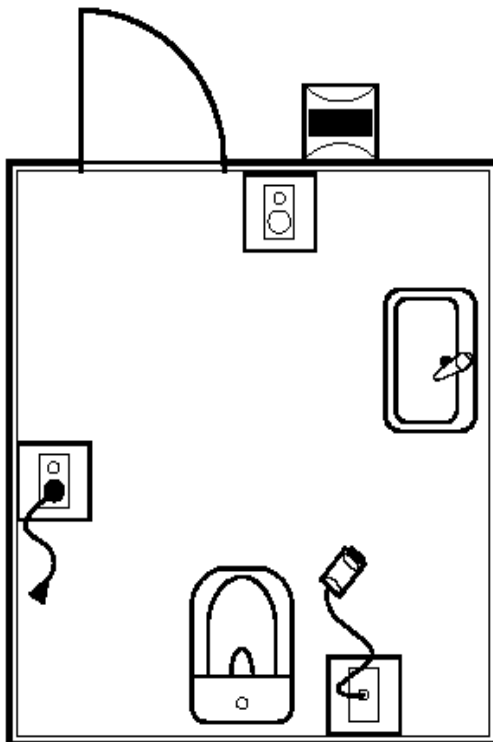
Example 3: Hospital



Example 2: Typical call point layout of a single accommodation



Example 4: Disabled persons' WC



SIGMA panel



Room indicator, group indicator



Call button with pull cord and reassurance LED



Reset button



Hand held call unit with reassurance cable 2m



Socket

SPECIFICATIONS

Operating voltage:- 24 VAC/DC (20...28V)
 Call line:- 2 conductors
 Opening contacts:- Yes
 Closing contacts:- Yes
 Reset line:- 2 conductors
 Closing contacts:- Yes
 Group light line:
 FLSY-2206:- 2 conductors
 FLSY-2205:- 4 conductors (monitored)
 Monitoring in the call line:- Short-circuit and breakage
 Monitoring in the reset line:- Short-circuit
 Monitoring current:- 7 mA DC
 Line conductor resistance:- Max 100 Ohm
 Relay contact:- 1 A, 60 VDC, 30 W
 1 A, 42 VAC, 30 VA (resistive load)
 Operating temperature:- +5...+40°C
 Device indicator visual alarm:- LED

ROOM INDICATOR FLSY-2205
 Memory function:- Selectable (ON/OFF)
 Buzzer sound:- Max 70 db/1m adjustable.
 Relay output:- 2pcs (change-over contacts)
 Power consumption: Max 200mA AC, 150mA DC
 Dimensions:- 85 x 85 x 30 mm
 Material:- White plastic
 Installation:- Surface installation

THE SIGMA PANEL



Monitored areas:- 10
 Memory function:- Selectable in groups of 5 areas
 Reset function:- Selectable in groups of 5 areas (from the panel or remote reset)
 Relay output:- 2pcs (change-over contacts)
 Adjustable buzzer: Max 60/40 db/1m (day/night)
 Power consumption:- Max 400 mA
 Test button:- Yes
 Mode indicator LED:- Yes
 Installation:- Surface installation with screws
 Dimensions:- 300 x 201 x 51mm
 Protection class:- IP 41
 Material:- White plastic

NOTE!

The devices in the system are not splash water tight.

The Sigma Range of Components.

Sigma can also connect to non-system equipment, ie BMS, telephone diallers, etc.

Type ID	Component	Colour	Pcs	Dims	
SIGMA Panel	A panel of 10 monitoring areas (loops) with audible, visual alarm, volume adjustable. Reset from either the panel or separate reset button. The panel has 2 relay outputs for alarm transfer.	White	1	300x200x50	
FLSY 2205 Room Indicator	A room indicator with red LED's. Audible and visual alarm, volume adjustable. Up to 8 call buttons and 4 reset units can be connected. The device can also be used as a group light.	White	1	85x85x35	
FLSY 2206 Group Indicator	A group indicator with audible and visual alarm, volume adjustable. The group indicator has no line monitoring.	White	1	85x85x35	
20-101 Call Button	A combined membrane call button with 2-meter pull cord and reassurance LED. The device has a text 'call' and is suitable for surface or flush mounting.	White	1	85x85x35	
20-102 Reset Button	The reset button with the a membrane type switch has reassurance light and is suitable for surface or flush mounting	White	1	85x85x35	
20-103 Hand Held Call Unit	The hand held call unit with two reassurance LED's has a 2-meter cable with plug which connects to the socket STR-4P	White	1	50x80x20 + 2m lead	
STR-4P Socket	The 3-pole 6.3mm socket has a 4-pole screw connector and can, for additional safety, be connected so that if the hand held (20-103) is removed will flag an alarm.	White	1	85x85x50	
Ceiling Pull	Ceiling mounted unit with orange lens + neon for reassurance. Complete with 2m lead and acorn.	White + Orange	1	Ø80mm x40	
FLSY 2220 Dome Panic Switch	Wall Mounted Dome Panic Push Switch with a twist to reset. IP67	Yellow + red	1	65x65x100	
FLSY 2255 Key Panic Switch	Wall mounted Panic Switch with key for resetting	Metallic + red	1	65x85x30	
MIM8118 Transformer	10VA rated transformer – 230VAC/24VAC	Black	1	65x85x45	