

Battery operated ICAO Low-intensity, Type A Obstacle Light (red only)

CEL-LI-20-006-P-R-TU is a battery-operated red obstacle light. The light has been designed for outdoor use and has an enclosure which fit 100mm (3 mm wall thickness) diameter tubular structure. It does not require any maintenance apart from cleaning the enclosure and changing the batteries when needed. The operating time of the batteries depends on the operating mode selected, typically 4 weeks.

SPECIFICATIONS

Key features

- Extremely reliable
- Very low power consumption
- 20 cd red steady burning light
- Very long battery lifetime
- Stabilised light output
- Photocell control
- Lightweight and small
- 470 mm total height

Benefits

- Very long maintenance intervals
- Low battery costs
- Easy to handle

RED light: Specifications met

- ICAO Annex 14 Volume 1. third edition July 1999 Table 6-3, Low-intensity, Type A (fixed obstacle) obstacle light
- ICAO Annex 14 Volume 1. second edition July 1995 chapter 7, unserviceability lights.

RED light: Photometric characteristics

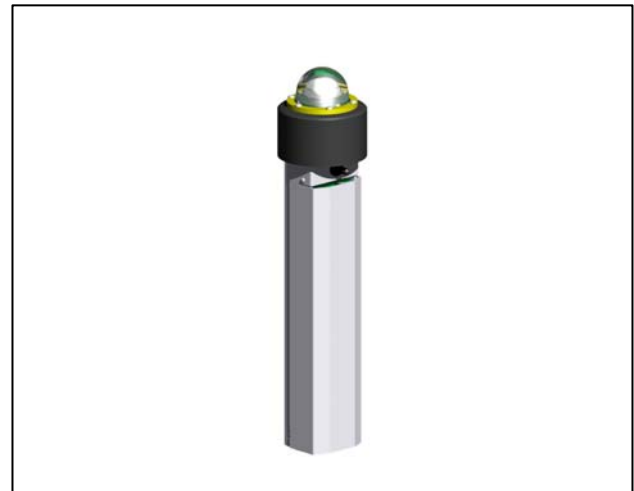
- Intensity 20 cd
- Colour: aviation red
- Vertical radiation pattern +5° to +17°, aiming angle +12°
- Current for the LEDs is stabilised by constant current generator
- Expected lifetime without light output falling below 20 cd >10 000 h

Photocell characteristics

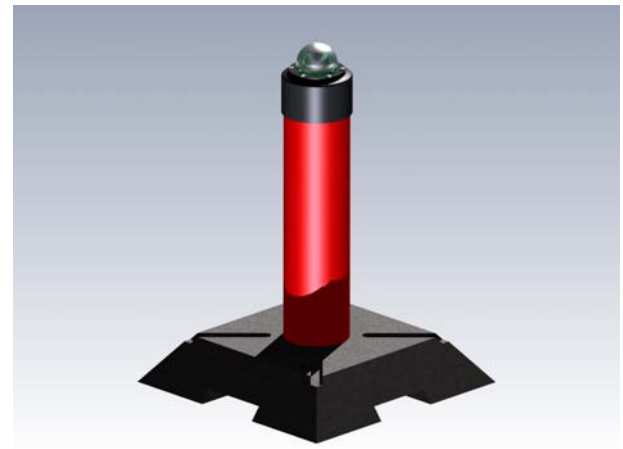
- No photocell, only ON/OFF switch

Electrical characteristics

- Optimised for Air-Alkaline battery (non-rechargeable)
- Nominal operating voltage 6 V DC
- Power consumption <1 W
- Operating voltage range 4-7 V DC
- Continuous operating time: TBC



CEL - LI-20-006-P-R-TU Obstacle Light



Other

- Corrosion and oxidation free materials
- Uncoloured glass
- Degree of protection: TBD
- Operating temperature range: -40...+55 °C
- Dimensions (LxWxH):
- Weight with 3 pcs Air-Alkaline battery: 3 kg
- 5 year warranty

Standard Batteries



- Air-Alkaline batteries (non-rechargeable)
- Environmentally friendly, no toxic materials
- Dimensions 67 x 67 x 98/108 (L x W x H)
- Nominal voltage 6 V
- Capacity 50 Ah
- Minimum capacity configuration: 1 battery (total 6 V 50 Ah)
- Full capacity configuration: 3 batteries (total 6 V 150 Ah)

Order codes

Obstacle Light: **CEL- LI-20-006-P-R-TU**
Air-Alkaline Battery: **EL-IP-5-6V**

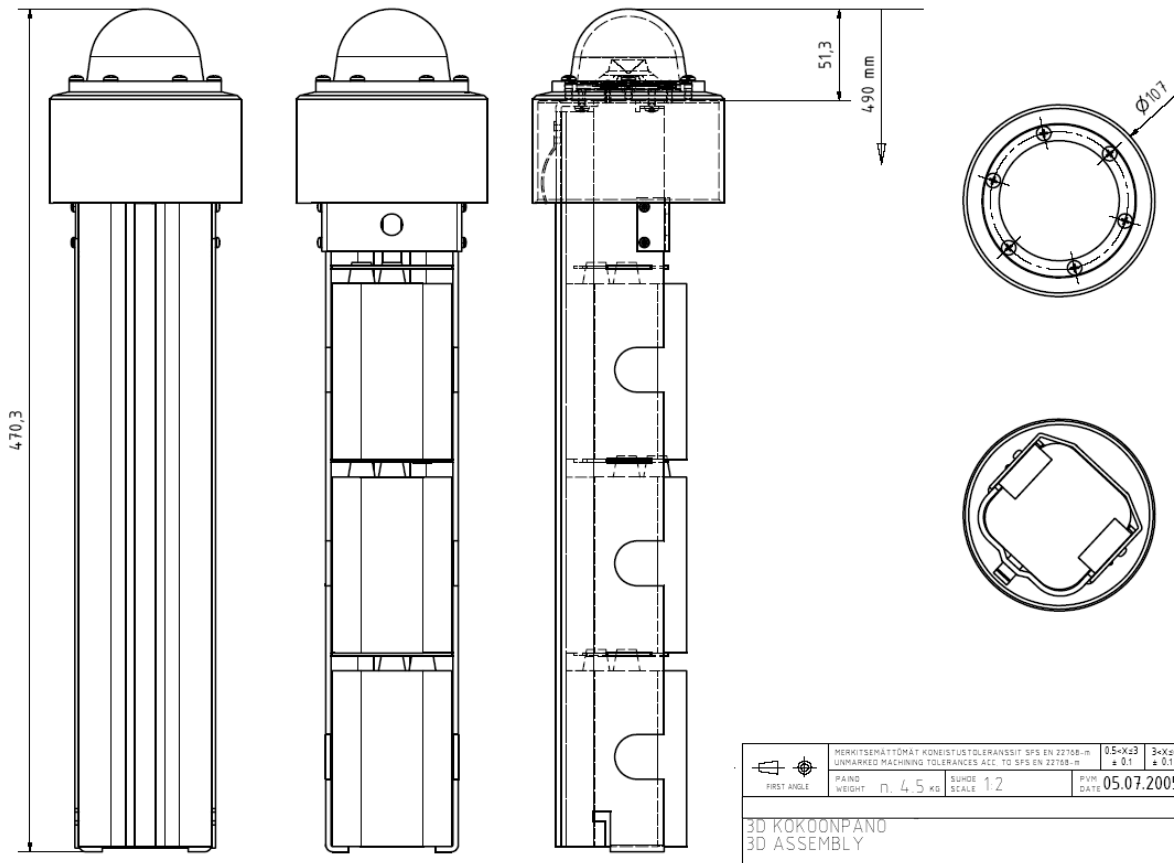
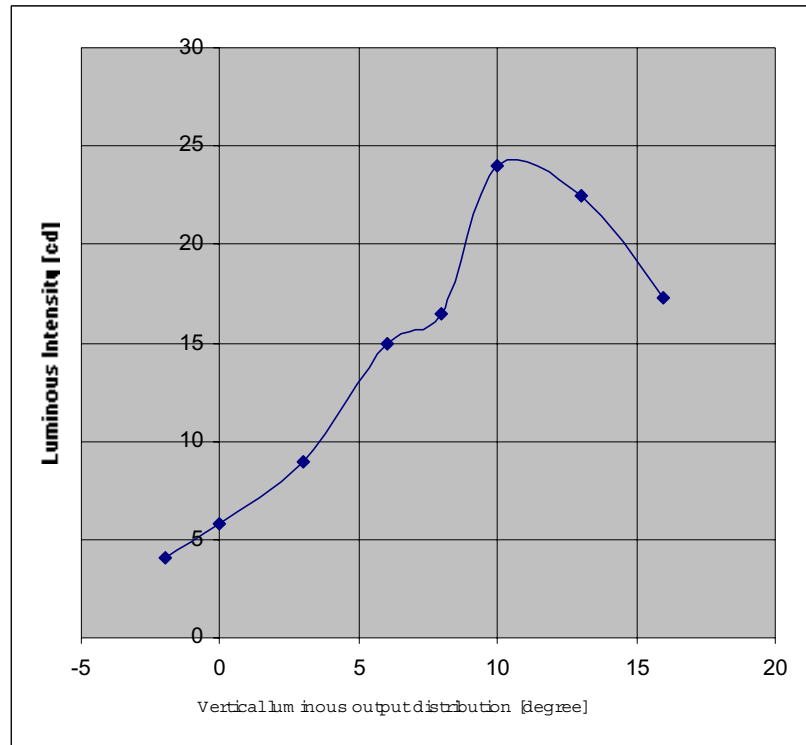
Options:

- Other colours: E.g. blue, green, yellow, white or orange light

	<p>OPERATING VOLTAGE</p> <p style="font-size: 2em;">6 V DC</p>
	<p>CAUTION ! LED RADIATION</p> <p style="font-size: 0.8em;">DO NOT STARE INTO LED BEAM OR VIEW DIRECTLY WITH OPTICAL INSTRUMENTS. CLASS 2A LED PRODUCT</p>

Technical information in this document is subject to change without notice. Copyright © CEL 2005

Battery operated ICAO Low-intensity, Type A Obstacle Light (red only)



Technical information in this document is subject to change without notice. Copyright © CEL 2005