

**24 V<sub>DC</sub> 50 cd Obstacle Light**
**Key features**

- Based on LED-technology
- 50 cd luminous output
- Steady burning red light
- Complete set with accessories
- Extremely reliable
- Very long life time
- Low power consumption
- 24 VDC operating voltage
- Stabilised light output
- Easy to install
- Mounting set and terminal box included

**Benefits**

- Long maintenance intervals
- Low energy costs
- Input voltage variations do not effect light output
- Very low lifetime costs

**Optical characteristics**

- Intensity >50 cd
- Colour aviation red
- Horizontal radiation pattern 360°
- Vertical radiation pattern 23°
- Current for the LEDs is stabilised by constant current generator
- Light output degradation less than 30% after 100.000 h of operation

**Electrical characteristics**

- LEDs are in several separate groups
- Nominal operating voltage 24 VDC
- Power consumption <10 W (<0.5 A constant current)
- Operating voltage range 24 to 28 VDC
- Overvoltage protection

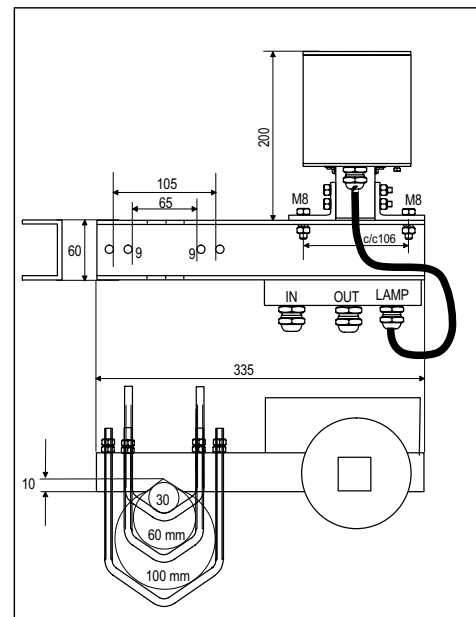
**Other**

- Black anodised aluminium housing
- Galvanised mounting arm
- Acid proof U-bolts and hex nuts
- Uncoloured glass cover
- Degree of protection IP 65
- Operating temperature range -55 to +55°C
- Height 300 mm, diameter 140 mm
- Wind load @ 200 km/h <150 N
- Total weight 3.0 kg
- 5 year warranty

**Order Code:** CEL-50-24-CST

Also available with 12 VDC, 48 VDC and 230 VAC operating voltages

Made in EU


**CEL-50-24-CST**

**Mechanical dimensions**


Technical information in this document is subject to change without notice. Copyright © CEL 2006

**24 V<sub>DC</sub> 50 cd Obstacle Light**

CEL-50-24-CST is an obstacle light utilising LED technology. The cabling and installation principles are similar to those of conventional obstacle lights, the only exception being the correct polarity required by DC feed.

Terminal box include screw terminals and overvoltage protectors.

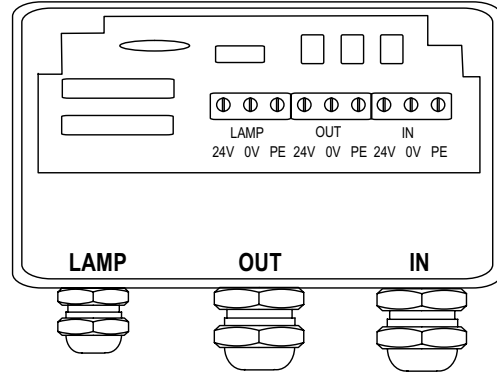
The polarity is:

- Blue -
- Black +
- Yellow-Green PE

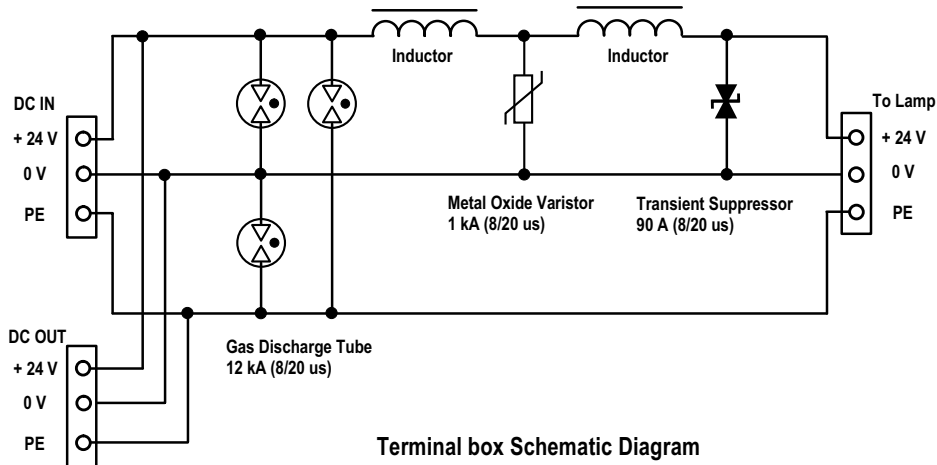
All connection alternatives can be protected with a 6 A or 10 A fuse or with a circuit breaker (C curve).

**Installation specifications**

- Cable gland for lamp: M20, 8-13 mm cable
- Cable gland for IN and OUT: M25, 11-17 mm cable
- Wire diameter: max. 6 mm<sup>2</sup>
- Recommended cable: 2x1.5+1.5 or 2x2.5+2.5 mm<sup>2</sup>



Cable Gland M20 for 8-13 mm cable      Cable Gland M25 for 11-17 mm cable      Cable Gland M25 for 11-17 mm cable

**CEL-50-24-CST terminal box**

**Terminal box Schematic Diagram**

**OPERATING VOLTAGE**  
**24 V<sub>DC</sub>**

---

**CAUTION ! LED RADIATION**  
DO NOT STARE INTO LED BEAM OR VIEW DIRECTLY WITH OPTICAL INSTRUMENTS.  
CLASS 2A LED PRODUCT

Technical information in this document is subject to change without notice. Copyright © CEL 2006