

48 V_{DC} 50 cd Obstacle Light
Key features

- Based on LED-technology
- 50 cd luminous output
- Steady burning red light
- Complete set with accessories
- Extremely reliable
- Very long life time
- Low power consumption
- 48 VDC operating voltage
- Stabilised light output
- Easy to install
- Mounting set and terminal box included

Benefits

- Long maintenance intervals
- Low energy costs
- Input voltage variations do not effect light output
- Very low lifetime costs

Optical characteristics

- Intensity >50 cd
- Colour aviation red
- Horizontal radiation pattern 360°
- Vertical radiation pattern 23°
- Current for the LEDs is stabilised by constant current generator
- Light output degradation less than 30% after 100.000 h of operation

Electrical characteristics

- LEDs are in several separate groups
- Nominal operating voltage 48 VDC
- Power consumption <10 W (<0.25 A constant current)
- Operating voltage range 48 to 58 VDC
- Overvoltage protection

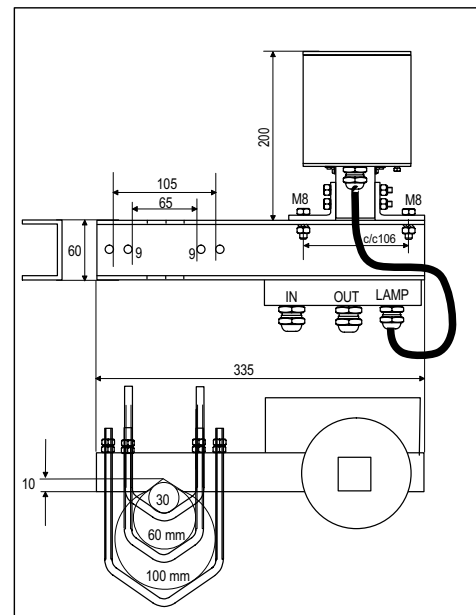
Other

- Black anodised aluminium housing
- Galvanised mounting arm
- Acid proof U-bolts and hex nuts
- Uncoloured glass cover
- Degree of protection IP 65
- Operating temperature range -55 to +55°C
- Height 300 mm, diameter 140 mm
- Wind load @ 200 km/h <150 N
- Total weight 3.0 kg
- 5 year warranty

Order Code: CEL-50-48-CST

Also available with 12 VDC, 24 VDC and 230 VAC operating voltages

Made in EU


CEL-50-48-CST

CEL-50-48-CST Obstacle Light Set


Technical information in this document is subject to change without notice. Copyright © CEL 2006

48 V_{DC} 50 cd Obstacle Light

CEL-50-48-CST is an obstacle light utilising LED technology. The cabling and installation principles are similar to those of conventional obstacle lights, the only exception being the correct polarity required by DC feed.

Terminal box includes screw terminals and overvoltage protectors.

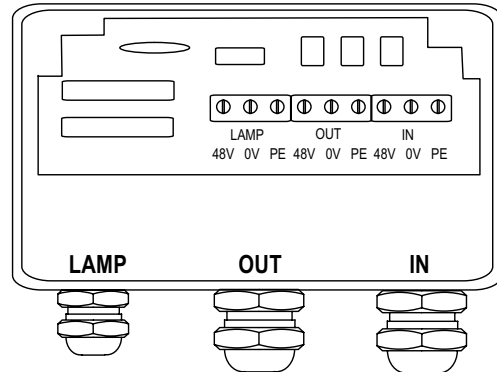
The polarity is:

- Blue -
- Black +
- Yellow-Green PE

All connection alternatives can be protected with a 6 A or 10 A fuse or with a circuit breaker (C curve).

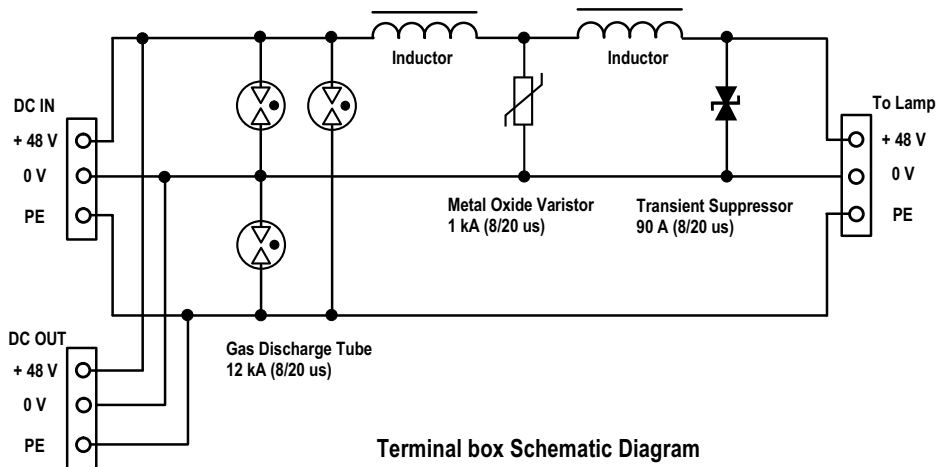
Installation specifications

- Cable gland for lamp: M20, 8-13 mm cable
- Cable gland for IN and OUT: M25, 11-17 mm cable
- Wire diameter: max. 6 mm²
- Recommended cable: 2x1.5+1.5 or 2x2.5+2.5 mm²



Cable Gland M20 for 8-13 mm cable Cable Gland M25 for 11-17 mm cable Cable Gland M25 for 11-17 mm cable

CEL-50-48-CST terminal box



Terminal box Schematic Diagram

OPERATING VOLTAGE
48 V_{DC}

CAUTION ! LED RADIATION
DO NOT STARE INTO LED BEAM OR VIEW DIRECTLY WITH OPTICAL INSTRUMENTS.
CLASS 2A LED PRODUCT

Technical information in this document is subject to change without notice. Copyright © CEL 2006

Contarnex Europe Limited
252 Martin Way, Morden,
Surrey SM4 4AW
England

tel. +44 20 8540 1034
fax +44 20 8543 3058
internet: www.contarnex.com
e-mail: info@contarnex.com