

24 V_{DC} , 200 cd LED Obstacle Light: CAA - CAP168 Low Intensity**Key features**

- 200cd steady burning red light
- Extremely reliable - long lifetime
- Very low power consumption
- 24V_{DC} nominal supply voltage
- Stabilised light output
- Lightweight and small – low wind load factor
- Easy to install
- No RF-radiations

Benefits

- Long maintenance intervals
- Low energy cost
- Supply power voltage variations do not affect to light output
- Very low total lifetime costs
- Low wind load
- Comes with five (5) years warranty

Specifications met

- CAP 168, Civil Aviation Authority, London, February 2001, Flight obstacle (low Intensity)

Optical characteristics

- Average intensity better than 200cd
- Colour aviation red
- Horizontal radiation pattern 360°
- Vertical radiation pattern 6°
- LED supply current stabilised by constant current generator
- 10 year continuous operating time

Electrical characteristics

- Nominal operating voltage 24V_{DC}
- Power consumption less than 42W (<1.3 A constant current)
- Operating voltage range 24...33V_{DC}
- Three-stage over-voltage protection

Mechanical characteristics

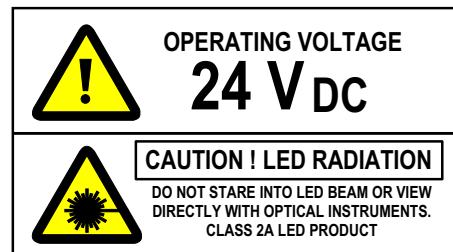
- Anodised aluminium body
- Glass cover
- Terminal box for 1,5 - 6 mm² wires
- Weather protection to IP 66
- Operating temperature range -55°C ... +55°C
- Height 350 mm, diameter 200 mm,
- Mounting set for 35 to 100 mm pipes and terminal box include
- Lamp weight 3,5kg
- Mounting set weight 4kg
- Wind load with mounting kit @ 200 km/h less than 500N

Order code: **CEL-LI-200-24-CST**
CEL-LI-200-230-CST Operation voltage 230 Ac

Made in EU



CEL-200-24-CST without mounting set



Technical information in this document is subject to change without notice. Copyright © CEL2007

24 V_{DC} , 200 cd LED Obstacle Light: CAA - CAP168 Low Intensity

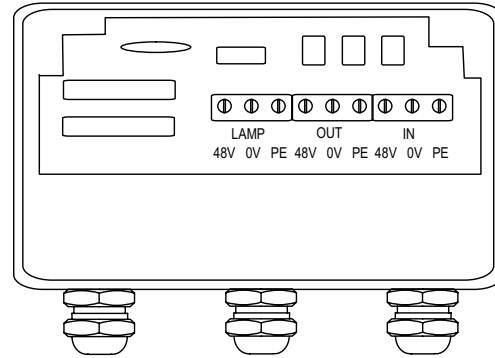
The CEL-LI-200-24-CST is an obstacle light utilising LED technology. The cabling and installation principles are similar to those of conventional obstacle lights, the only exception being the correct polarity required by DC feed.

Terminal box include screw terminals and overvoltage protectors.

The polarity is:

- Blue -
- Black +
- Yellow-Green PE

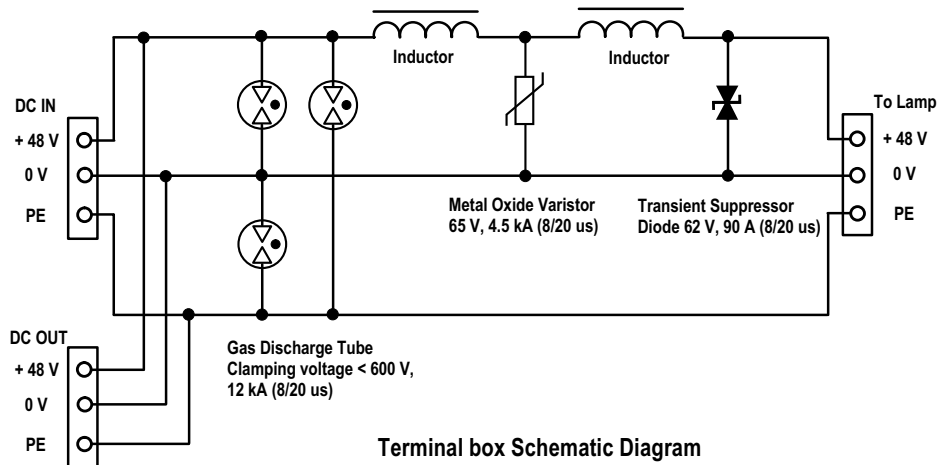
All connection alternatives can be protected with a 6A or 10A fuse or with a circuit breaker (C curve).



200-48-SG terminal box

Installation specifications

- Cable gland: M20
- Cable diameter: 8...13 mm
- Wire diameter: max. 6 mm²
- Recommended cable: 2x1.5+1.5 or 2x2.5+2.5 mm²



Terminal box Schematic Diagram

OPERATING VOLTAGE

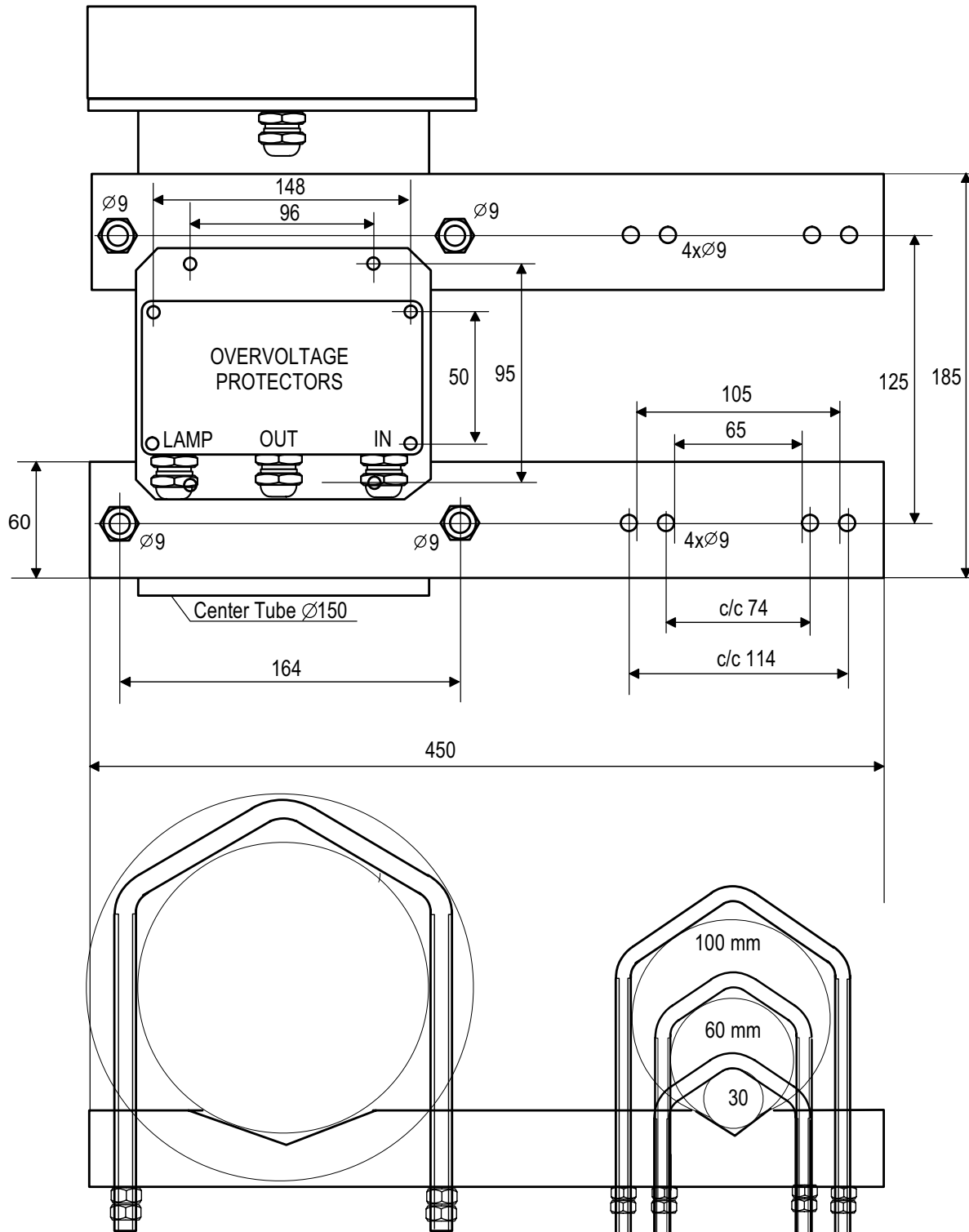
24 V DC

CAUTION ! LED RADIATION

DO NOT STARE INTO LED BEAM OR VIEW DIRECTLY WITH OPTICAL INSTRUMENTS.
CLASS 2A LED PRODUCT

Technical information in this document is subject to change without notice. Copyright © CEL2007

24 V_{DC} , 200 cd LED Obstacle Light: CAA - CAP168 Low Intensity



Mounting arms: Galvanised steel, U-bolts: AISI 316, Hex nuts: AISI 316

Technical information in this document is subject to change without notice. Copyright © CEL2007