

**Battery operated ICAO Low-intensity, Type A Obstacle Light (red only)**

CEL-LI-20-006-P-R-TU is a battery-operated red obstacle light. The light has been designed for outdoor use and has an enclosure which fits into standard diameter tubular structure. It does not require any maintenance apart from cleaning the enclosure and changing the batteries when needed. The operating time of the batteries depends on the operating mode selected, typically 4 weeks.

**SPECIFICATIONS**
**Key features**

- Extremely reliable
- Very low power consumption
- 20 cd red steady burning light
- Very long battery lifetime
- Stabilised light output
- Photo-cell control
- Lightweight and small
- 470 mm total height

**Benefits**

- Very long maintenance intervals
- Low battery costs
- Easy to handle

**RED light: Specifications met**

- ICAO Annex 14 Volume 1. third edition July 1999 Table 6-3, Low-intensity, Type A (fixed obstacle) obstacle light
- ICAO Annex 14 Volume 1. second edition July 1995 chapter 7, unserviceability lights.

**RED light: Photometric characteristics**

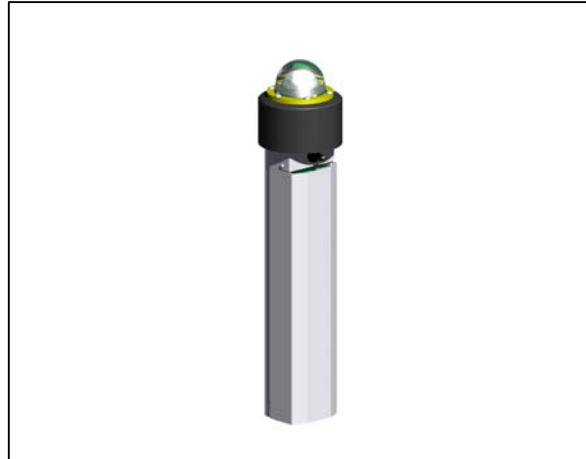
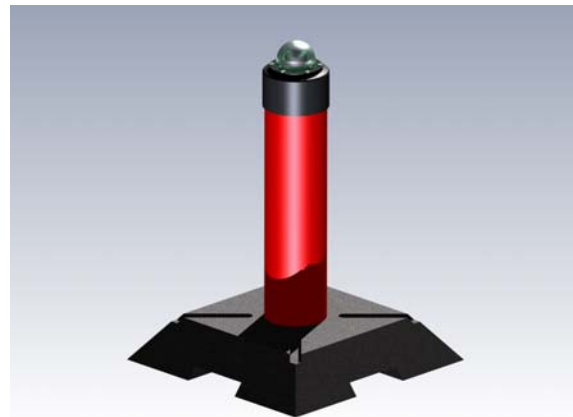
- Intensity 20 cd
- Colour: aviation red
- Vertical radiation pattern +5° to +17°, aiming angle +12°
- Current for the LEDs is stabilised by constant current generator
- Expected lifetime without light output falling below 20cd >10 000 h

**Photocell characteristics**

- No photocell, only ON/OFF switch

**Electrical characteristics**

- Optimised for Air-Alkaline battery (non-rechargeable)
- Nominal operating voltage 6 VDC
- Power consumption <1W
- Operating voltage range 4-7 VDC
- Continuous operating time: TBC


**CEL - LI-20-006-P-R-TU Obstacle Light**

**Other**

- Corrosion and oxidation free materials
- Uncoloured glass
- Degree of protection: TBC
- Operating temperature range: -40..+55 °C
- Dimensions (LxWxH):
- Weight with 3 pcs Air-Alkaline battery: 3kg
- 5 year warranty

**Standard Batteries**

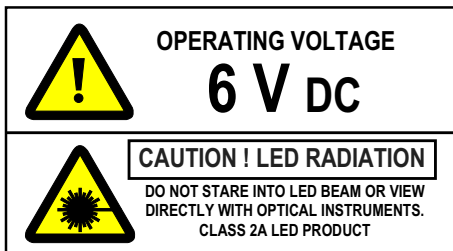
- Air-Alkaline batteries (non-rechargeable)
- Environmentally friendly, no toxic materials
- Dimensions 67 x 67 x 98/108 (L x W x H)
- Nominal voltage 6V
- Capacity 50Ah
- Minimum capacity configuration: 1 battery (total 6V 50Ah)
- Full capacity configuration: 3 batteries (total 6V 150Ah)

**Order codes**

Obstacle Light: **CEL-LI-20-006-P-R-TU**  
Air-Alkaline Battery: **EL-IP-5-6V**

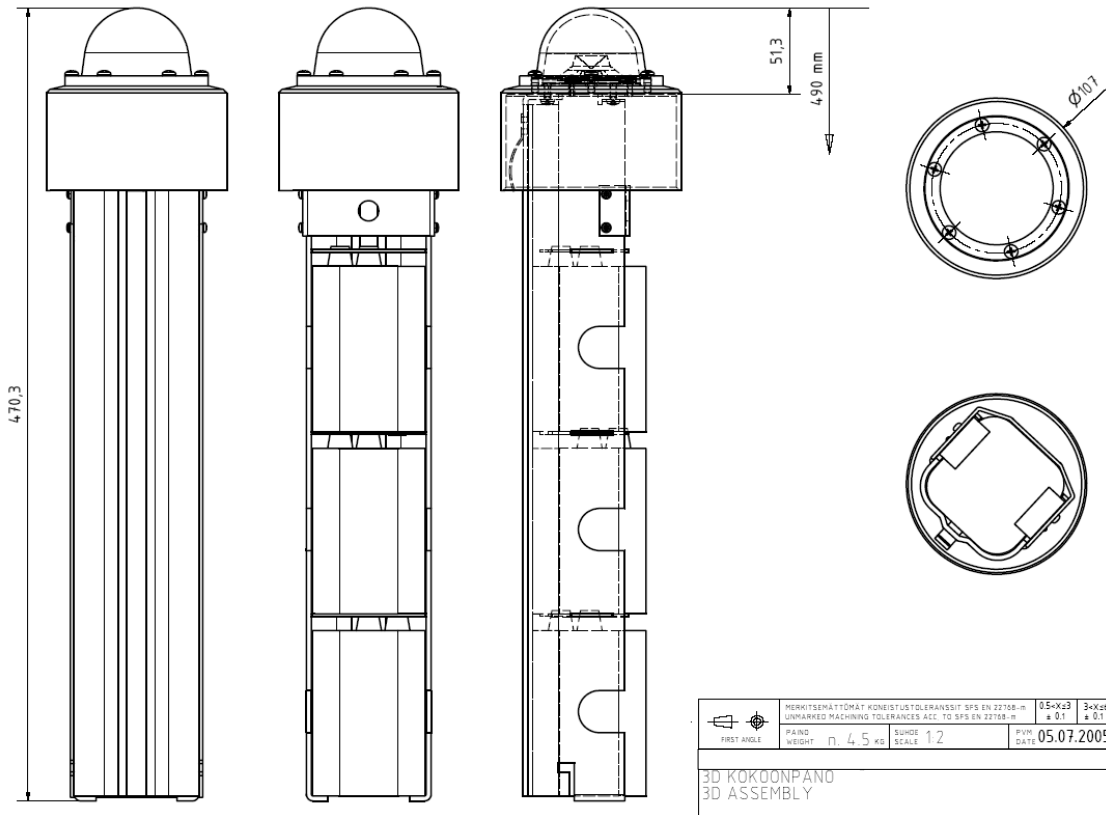
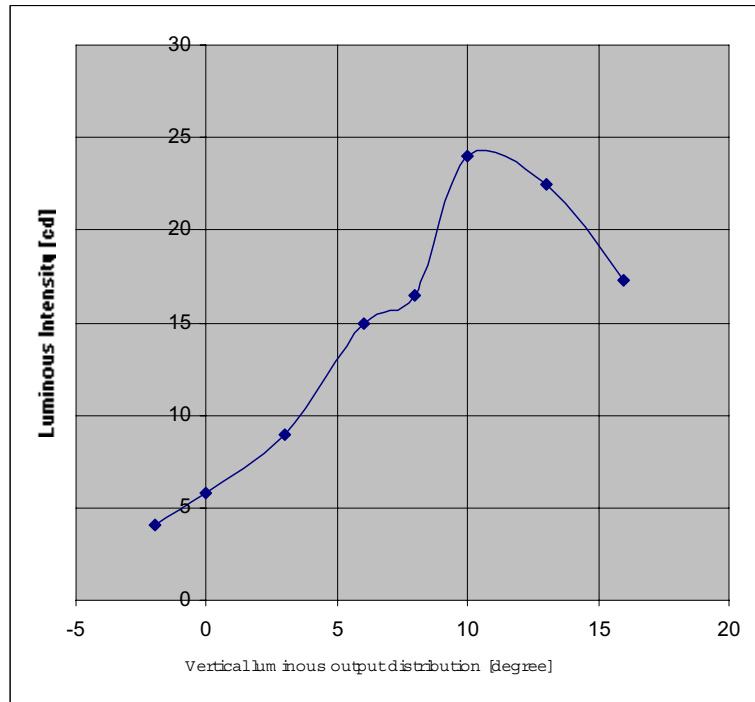
**Options:**

- Other colours: E.g. blue, green, yellow, white or orange light



Technical information in this document is subject to change without notice. Copyright © CEL 2005

Battery operated ICAO Low-intensity, Type A Obstacle Light (red only)



Technical information in this document is subject to change without notice. Copyright © CEL 2005